



# AQUAFORCE<sup>®</sup> e-MT

## PUMP STATIONS



BRAFEMT R4

 **GOULDS**  
WATER TECHNOLOGY  
a xylem brand

# Introducing **AQUAFORCE** e-MT packaged booster system from Goulds Water Technology

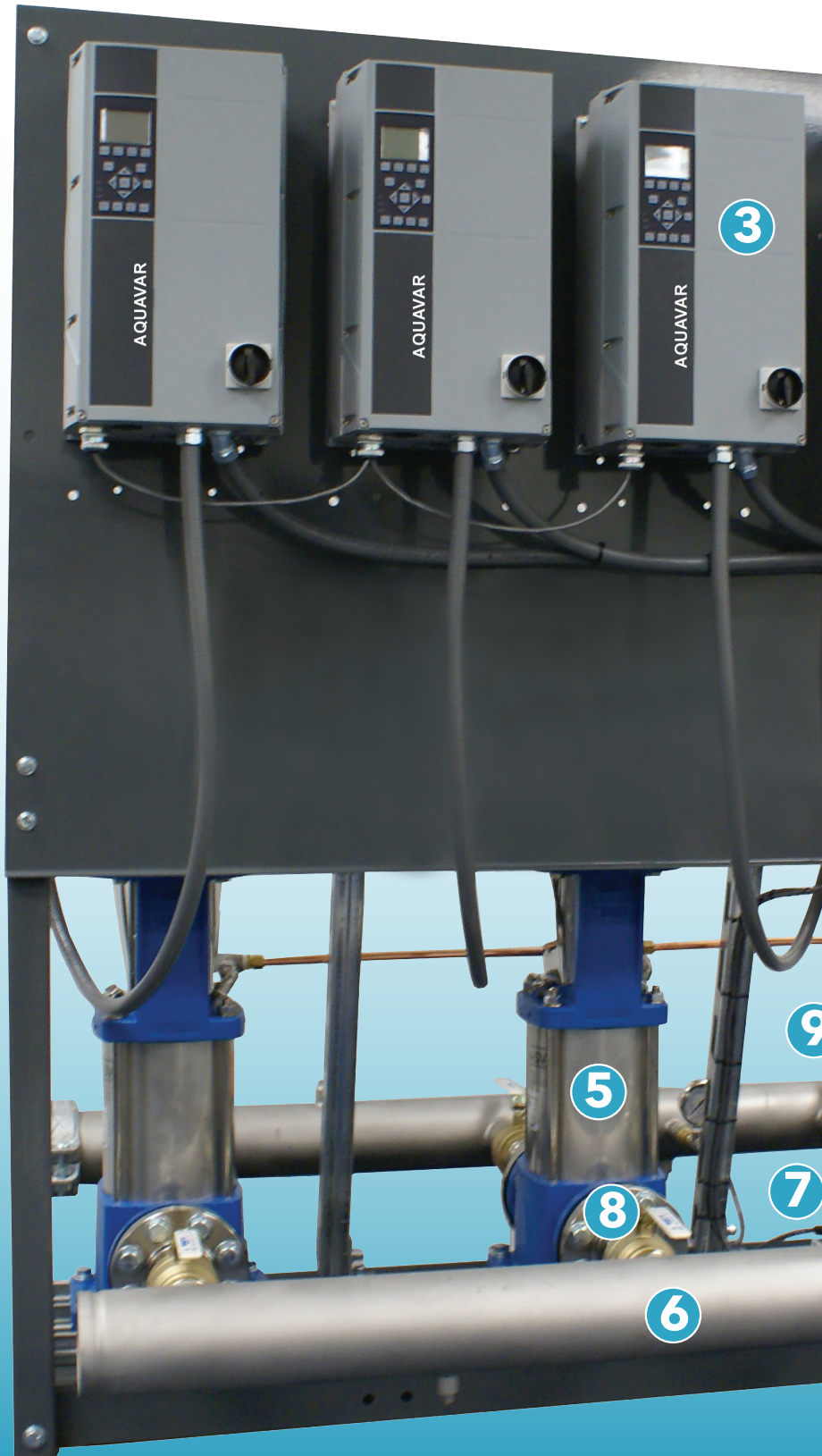
- 2-4 Pump Configurations  
(Option for 5 or 6 pumps)
- Up to 2100 GPM and 300 PSI  
Working Pressure
- 208-230, 460, 575 Volt Premium  
Efficient Motors
- 50 Hz available as engineered to  
order
- 304 S.S. Grooved Manifolds
- NEMA 1 or NEMA 12 Control Panel
- 10" Color Touchscreen Interface
- Individual Drive Disconnect Switch
- Lead/Lag Alternation
- No Flow Shutdown
- Pipe Fill Mode
- Trending Log
- Dynamic Flow Loss Compensation
- Each Pre-Programmed Station is  
Fully Tested for Flow and Pressure

## GENERAL

- NSF/ANSI 61 Annex G Certified
- UL/cUL Category QCZJ Package
- Pump System Listing
- UL508A Control Panel Listing
- ASHRAE 90.1-2010 Compliant
- BTL Certified

## TYPICAL APPLICATIONS

- Rural Water Districts
- Irrigation
- Industry Plants
- Buildings



# Features that make a difference

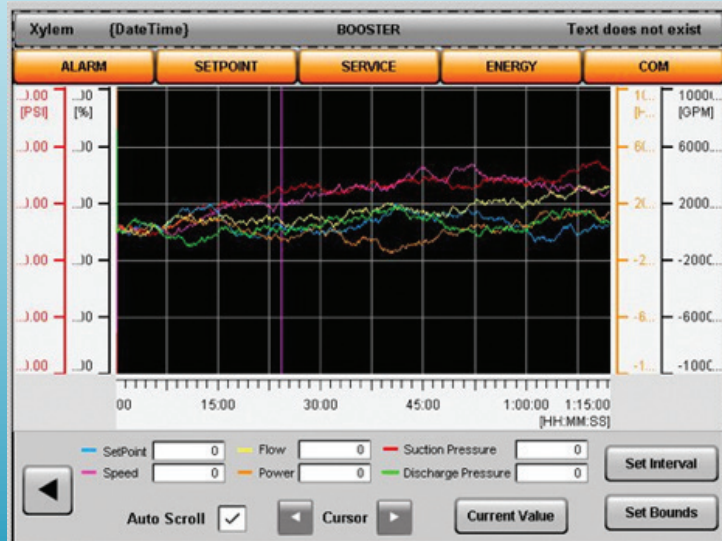
1. e-MT Pump Logic Controller with NEMA 1 or 4 enclosure, a 5.7" LED Color Touchscreen provides unmatched data displayed on a single intuitive screen and trending log covering power, pressure, set point, speed, and flow
2. Station disconnect switch
3. Aquavar UL Type 1 or 12 VFD's with individual fused disconnect permits continued operation and serviceability while maintaining partial or full flow.
4. Premium Efficiency Motors (not shown)
5. Xylem brand e-SV vertical multi-stage pumps, or NPE or SSH end-suction pumps (not shown)
6. 304 S.S. Suction and Discharge Manifolds grooved end (optional flanges)
7. 2.5" Pressure Gauges
8. NSF-61 certified isolation valves
9. Silent Type 316 S.S. Check Valves



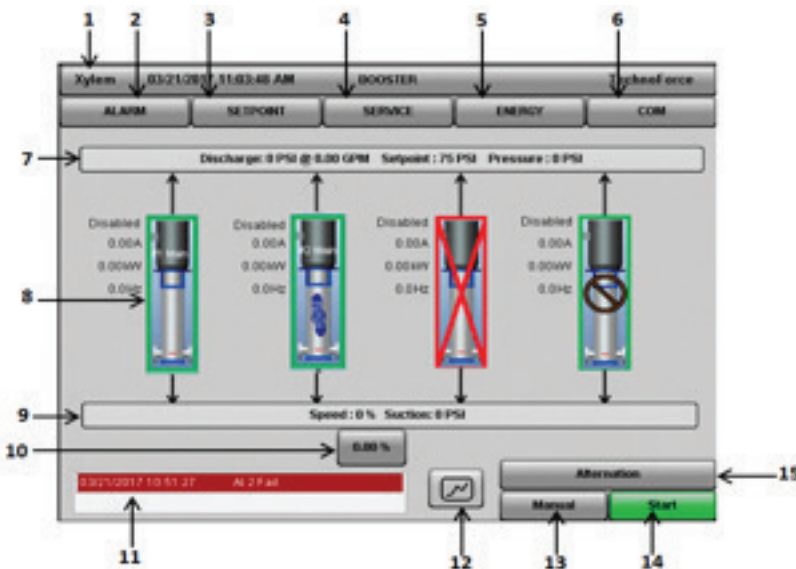
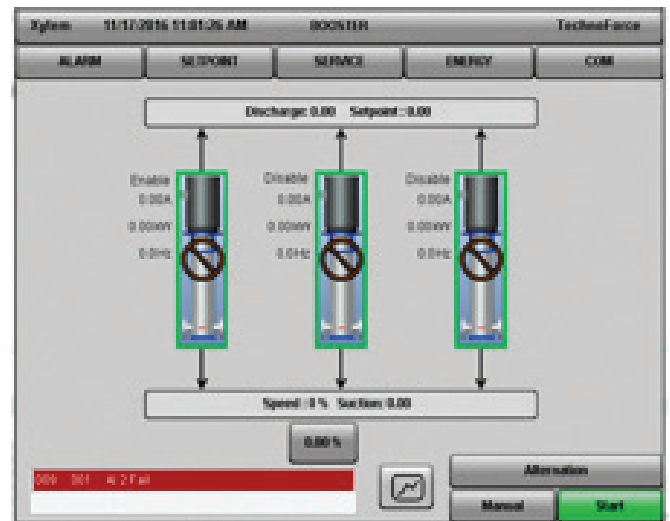
## STANDARD OPTIONS

- UL Type 1 VFD's and NEMA 1 Control Enclosure
- Manifold Flanges
- Loss of Prime Assembly
- Low Suction Prime Line
- Low Inlet Pressure Switch
- Alarm Horn
- BACnet MSTP or IP, Modbus Serial or TCP
- Thermal Purge (std default)
- Reducing Coupling
- 5 Point Flow Test
- Witness Test
- Flex Connectors
- Surge Arrestors
- Suction Pressure Transducer (std default)
- Redundant Pressure Transducer

## Trending Log Screen



# AQUAFORCE home screen



1. Home Tab
2. Alarm Screen Navigation button
3. Setpoint Screen Navigation button
4. Service Screen Navigation button
5. Energy Screen Navigation button
6. Com Screen Navigation button
7. Discharge Bar
8. Pump Status
9. Suction Bar
10. Pump Speed Control Button (manual)
11. Alarm Status Screen
12. Trend Screen Navigation button
13. System Mode of Operation
14. System Start/Stop
15. Manual Alternation



## Xylem Product Cybersecurity

Xylem values your system security and the availability of your critical services. For more information on Xylem cybersecurity practices or to contact the cybersecurity team please visit [xylem.com/security](http://xylem.com/security).



Xylem Inc.  
 2881 East Bayard Street Ext., Suite A  
 Seneca Falls, NY 13148  
 Phone: (844) XYL-PUMP [844-995-7867]  
 Fax: (888) 322-5877  
[www.xylem.com/goulds](http://www.xylem.com/goulds)

Xylem and AQUAFORCE are registered trademarks of Xylem Inc. or one of its subsidiaries. Goulds is a registered trademark of ITT Manufacturing Enterprises LLC and is used under license. MODBUS is a registered trademark of Schneider Electric USA, Inc. All other trademarks or registered trademarks are property of their respective owners.

© 2024 Xylem Inc. BRAFEMT R4 May 2024

Learn more about AQUAFORCE e-MT

