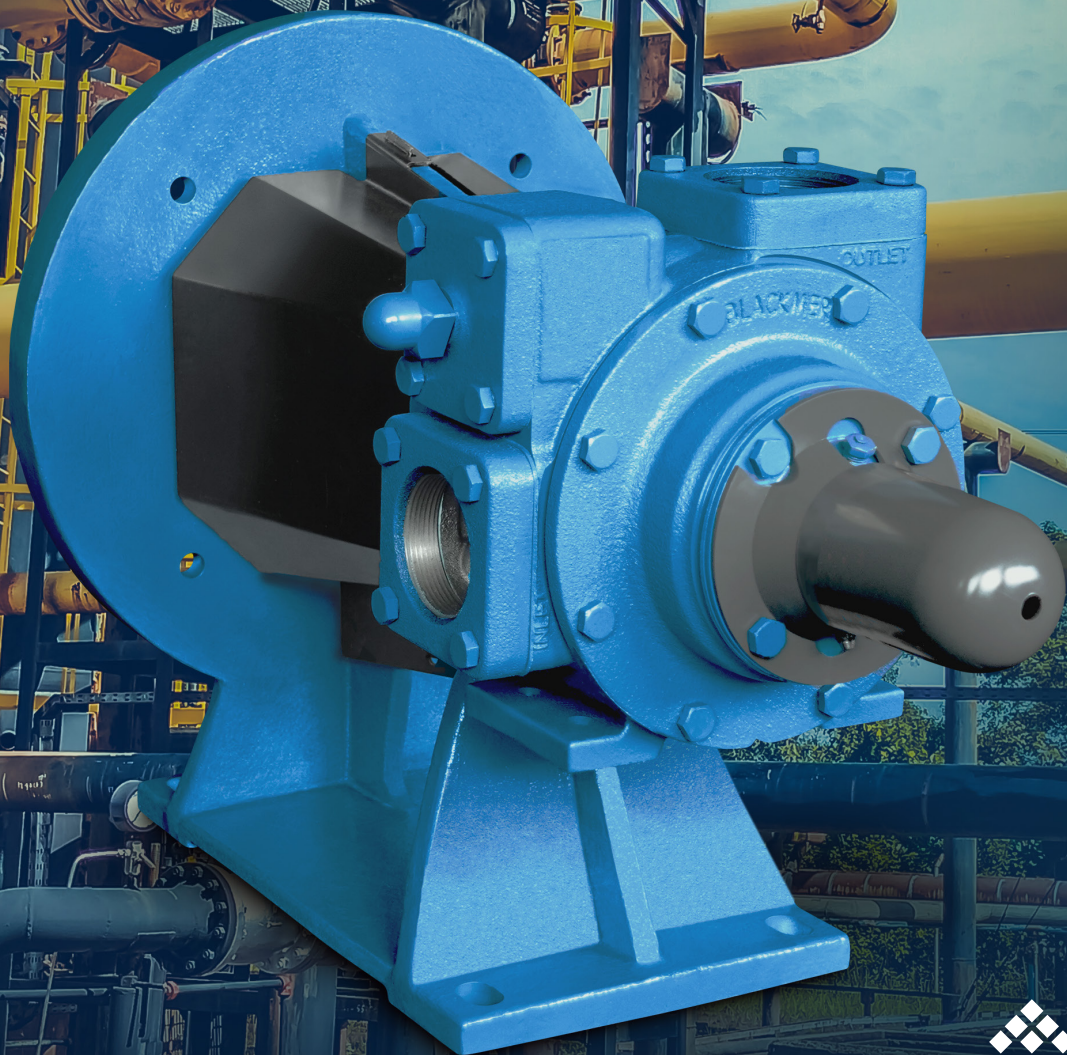


Direct Drive Series

SLIDING VANE PUMPS | PRODUCT BROCHURE



Blackmer

Where Innovation Flows



High speed, high flow, compact, bi-directional, and self-priming are just a few of the benefits of the Direct Drive Series Sliding Vane Pumps.

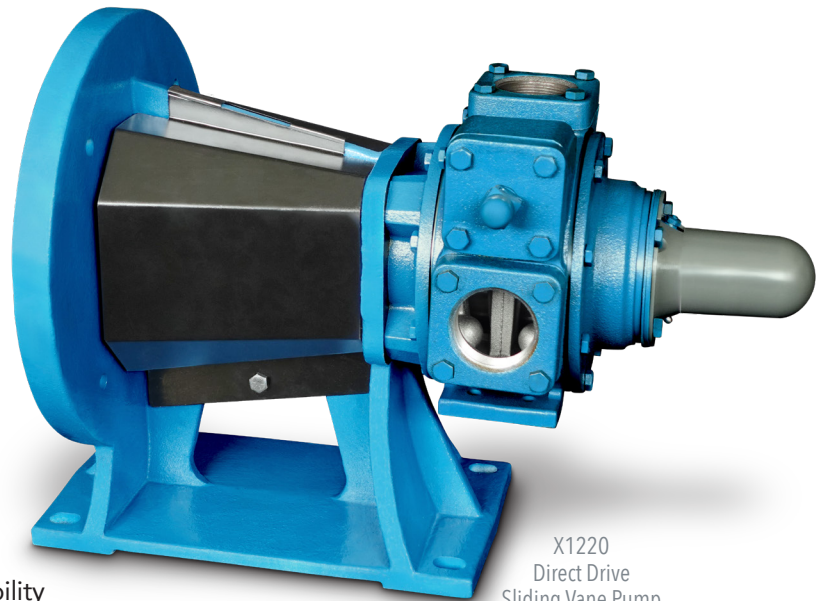
MOTOR SPEED, DIRECT DRIVE TRANSLOADING PUMPS

Blackmer® Direct Drive Series | Compact and Flexible, Mounts in any Orientation

Available in 2- and 2.5-inch sizes, these motor speed, Direct Drive Sliding Vane Pumps are designed for fast loading and unloading of thin viscosity fluids (0.2 - 20 cP). Alignment-free Direct Drive Series Sliding Vane Pumps eliminate the need for a V-belt or gear reducer, ensuring a small compact footprint thanks to an adapter that directly couples the pump to a 50- or 60-Hz motor. This direct drive setup eliminates misalignment between the pump and motor shaft, saving:

- **Time**
 - o No field alignment needed. No special tools, or contractors necessary.
- **Money**
 - o No premature replacement of seals, bearings, shafts or couplings due to wear because of misalignment issues.
- **Space**
 - o Small footprint due to the lack of gearbox or belt drive provides installation flexibility.

With its ability to be mounted in any orientation – vertical, horizontal, or inverted – and be used in portable mobile installations, the Direct Drive Series provides flexibility in almost any tank loading or unloading application.



X1220
Direct Drive
Sliding Vane Pump

Applications:

- Truck Loading & Unloading
- Transloading Between Tanks
- Batch Loading

Fluids:

- Solvents
- Gasoline
- Diesel
- Biofuel
- Caustic
- DEF/Ad-Blu
- Vegetable Oils
- Other Chemicals

Blackmer® Direct Drive Series | Transloading Pumps

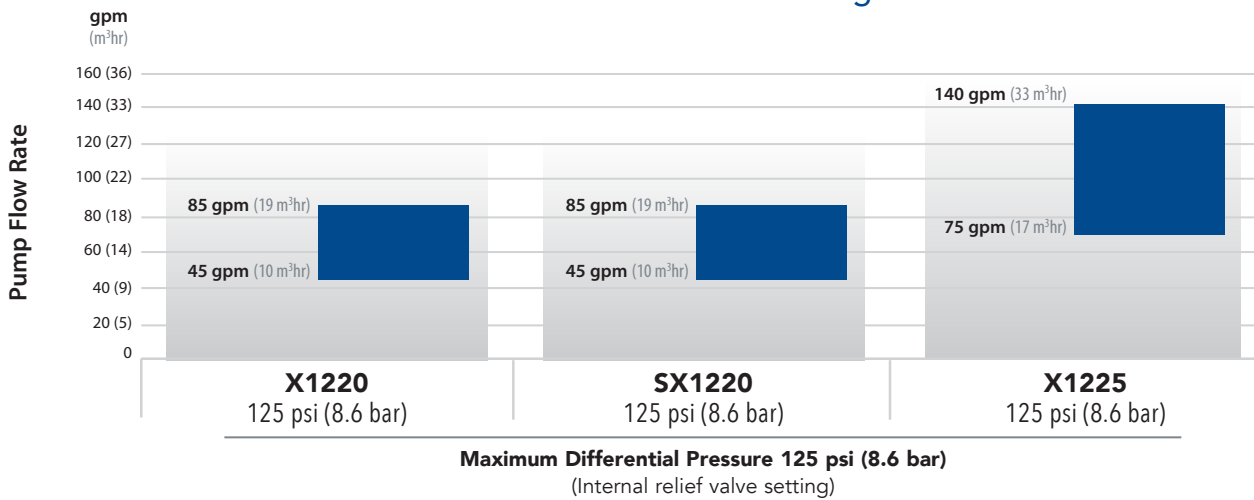
Features and Benefits

Available in iron and stainless steel construction, the Direct Drive Series Pumps have a maximum differential pressure of 125 psi (8.6 bar) and can achieve flow rates of up to 145 gpm (33 m³/hr) with the 2.5-inch model, and 85 gpm (19 m³/hr) for the 2-inch model. Additionally, with sliding vane technology, the Direct Drive Series Pumps excel at the following:

- **Self-Prime & Suction Lift** – dry prime without pre-filling of piping or the pump with a rated suction lift of 25 feet (7.6 meters)
- **Line-Stripping & Product Recovery Capabilities** – effectively evacuate tank liquid heel and purge piping system between batches
- **Bi-Directional Pumping** – operate the pump forwards and backwards without any re-piping.

MODEL(S)	CONSTRUCTION	PORT SIZE
X1220	Cast Iron	2"
SX1220	Stainless Steel	2"
X1225	Cast Iron	2.5"

Nominal Flow Rate Range



MOTOR SIZES

	MOTOR SIZES	MODEL(S)		
		X1220	SX1220	X1225
NEMA, C-Face Units	213TC (3 hp)	✓	✓	
	215TC (5 hp)	✓	✓	
	254TC (7.5 hp)	✓	✓	✓
	256TC (10 hp)			✓
IEC, B5 Flange Units	132S (3 kW)	✓	✓	
	132M (4 kW)	✓	✓	
	132M (5.5 kW)	✓	✓	✓
	160M (7.5 kW)			✓

MAINTENANCE KITS

MODEL(S)	DESCRIPTION	PART NUMBER
X1220	Kit - Maintenance	899186
SX1220	Kit - Maintenance	899187
X1225	Kit - Maintenance	899185



PSG Grand Rapids
1809 Century Avenue SW
Grand Rapids, MI 49503-1530
USA
P: +1 (616) 241-1611
info@blackmer.com
psgdover.com/blackmer



Where Innovation Flows

101-010 04/15

Authorized PSG® Partner:

Copyright 2025 PSG®, a Dover company