

# GUARDSMAN Modular Integral Filter/Regulators

# CFDR60 Models Port Sizes: 1/4, 3/8, 1/2



Model Shown: CFDR60-3

## SPECIFICATIONS

### Ambient/Media Temperature:

Plastic Bowl: 40° to 125°F (4° to 52°C).  
Metal Bowl: 40° to 125°F (4° to 52°C).

**Body:** Zinc.

**Bowl:** 4-Ounce (120-ml) capacity polycarbonate plastic with zinc shatterguard; optional zinc bowl.

**Dome and Knob:** Acetal.

### Filter Drain:

Internal automatic drain; optional manual drain.

Filter Element: 5- $\mu$ m-rated polyethylene; optional 5- $\mu$ m, 20- $\mu$ m, or 40- $\mu$ m sintered bronze.

**Fluid Media:** Compressed air.

### Inlet Pressure:

15 psig (1 bar) minimum with automatic drain.  
Plastic bowl: 150 psig (10 bar) maximum.  
Metal bowl: 200 psig (14 bar) maximum.

**Outlet Pressure:** Adjustable up to 100 psig (7 bar).

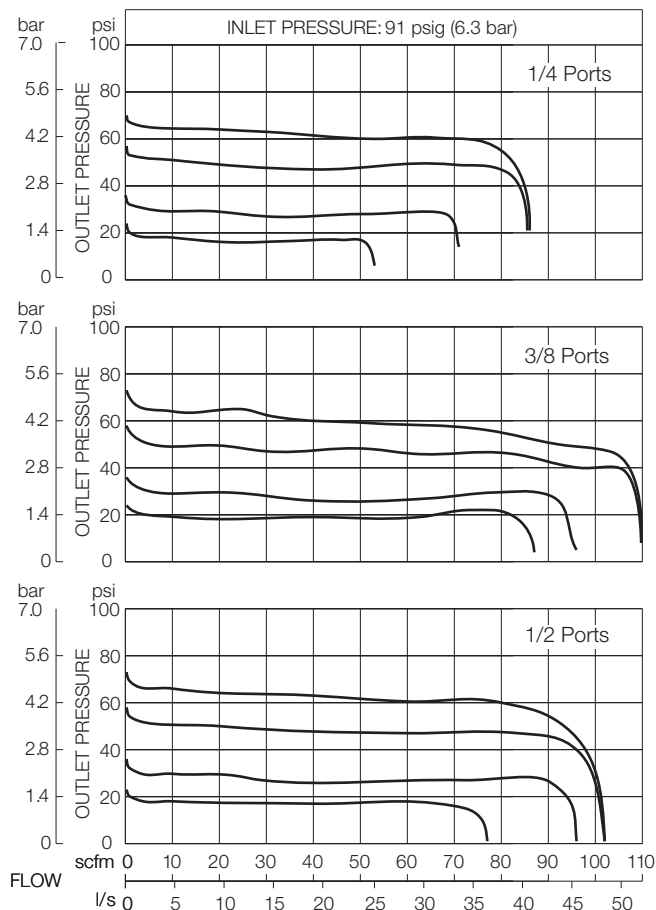
**Pressure Gauge:** 0 to 200 psig (14 bar); 1/4 NPT gauge ports front and rear.

**Panel Mounting:** 1-9/16 inch (40 mm) hole required.

**Seals:** Nitrile

- ◆ Filter and regulator consolidated in a single assembly.
- ◆ Modular or inline mounting.
- ◆ 5- $\mu$ m-rated polyethylene filter element; optional sintered bronze elements.
- ◆ High-strength polycarbonate plastic filter bowl with zinc shatterguard; optional zinc bowl.
- ◆ Internal automatic drain; optional manual drain.
- ◆ Self-relieving piston-type regulator; non-relieving optional.
- ◆ Pressure gauge.
- ◆ NPTF port threads; optional BSPP threads.

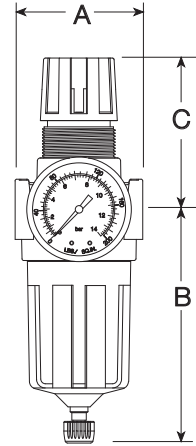
## FLOW CHARTS



**DIMENSIONS** inches (mm)

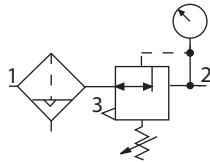
Bowl	A	B *	C **	Depth †	Weight †
					lb (kg)
Plastic	2.7 (67)	4.6 (116)	3.3 (83)	2.4 (60)	1.44 (0.65)
Metal	2.7 (67)	4.9 (123)	3.3 (83)	2.4 (60)	1.50 (0.68)

† Less gauge.



**ISO Filter/Regulator Symbol**

**Automatic Drain  
Self-relieving**



**REPLACEMENT FILTER ELEMENT KITS**

Element Type	Kit Number
5-µm polyethylene (Std element).....	KA60F-03
5-µm bronze.....	KA60F-03E5
20-µm bronze.....	KA60F-03E4
40-µm bronze.....	KA60F-03E3

**ORDERING INFORMATION**

Change the letters in the sample model number below to specify the filter/regulator you want.

**B C FD R60- 2 Y P W**

**BOWL TYPE**

Plastic bowl..... Leave Blank  
Metal bowl..... B

**FILTER DRAIN**

Internal automatic drain ..... FD  
Manual drain..... F

**PORT SIZE**

1/4 NPTF..... 2  
3/8 NPTF..... 3  
1/2 NPTF..... 4

**PORT TYPE**

NPTF threads ..... Leave Blank  
BSPF threads ..... W

**OPTIONS** (More than one option can be chosen. Add in alphabetical order)

0-200 psig Gauge ..... Leave Blank  
No psig Gauge ..... NG  
Plastic Mounting nut ..... P  
Metal Mounting nut ..... PN

**OPTIONS** (More than one option can be chosen. Add in alphabetical order)

None..... Leave Blank  
Non-relieving ..... A  
Sintered bronze filter element:  
5-µm rating ..... E5  
20-µm rating ..... E4  
40-µm rating ..... E3  
Adjusting springs:  
0-150 psig (0-10 bar) ..... H  
0-50 psig (0-3.4 bar) ..... L

**MOUNTING BRACKETS**

See page 320.

GUARDSMAN Modular Integral Filter/Regulator, CFDR60 Series